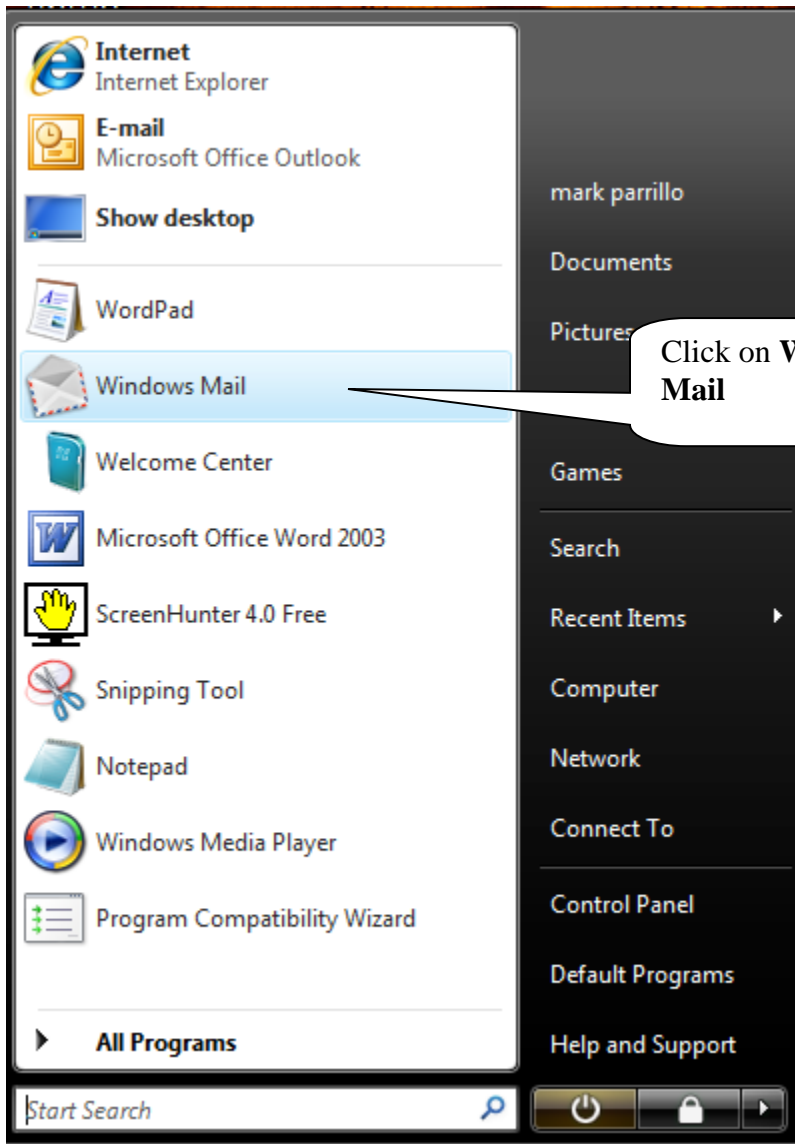
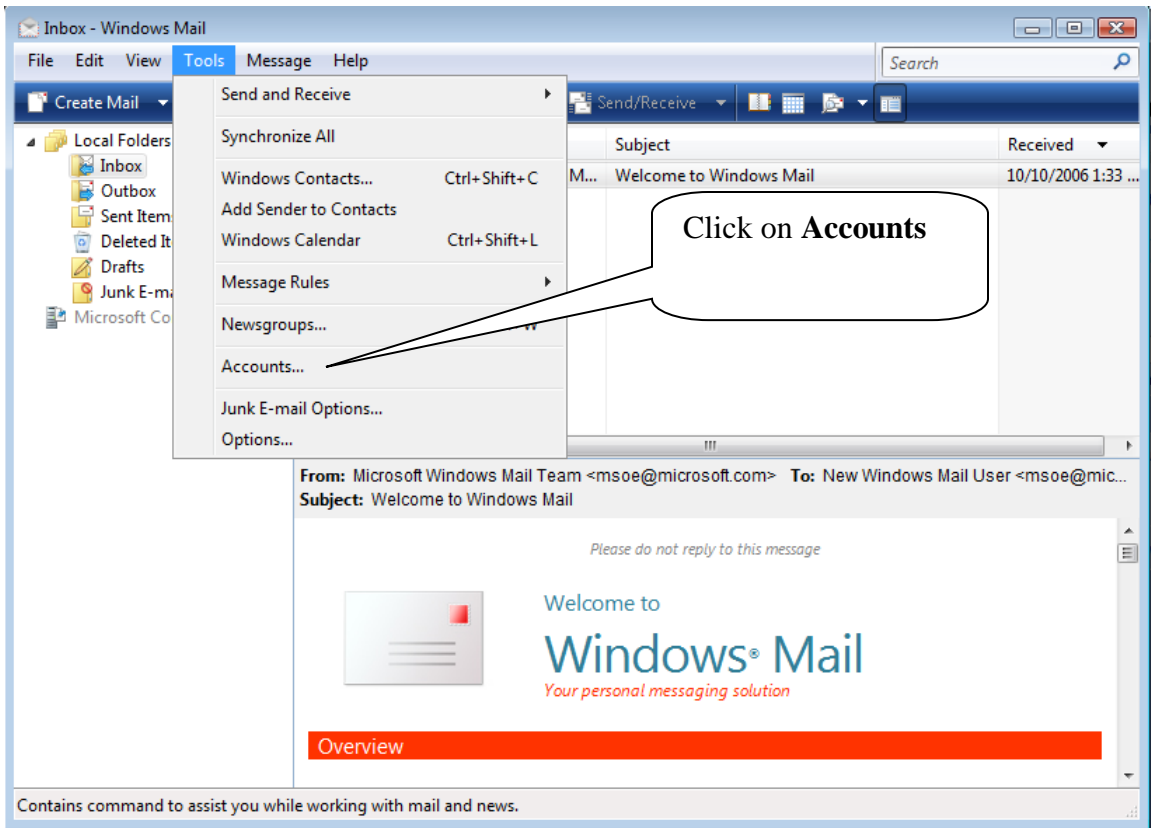
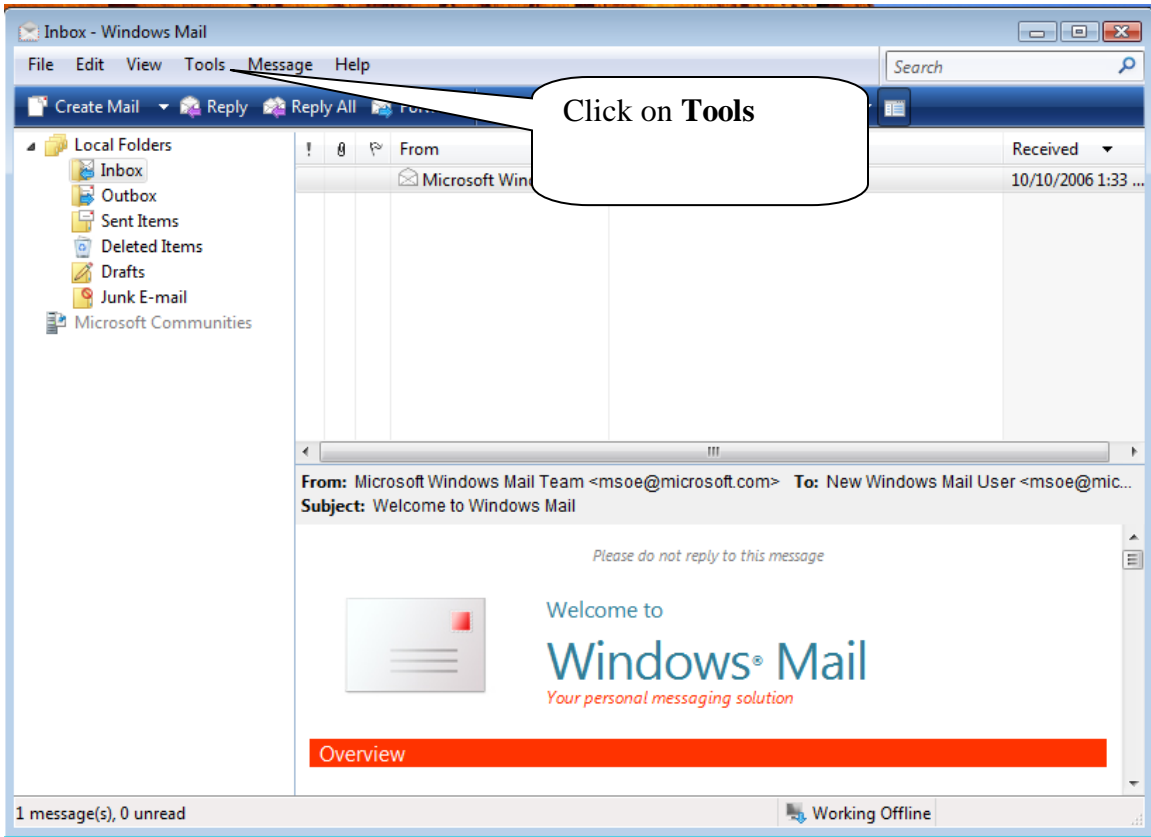
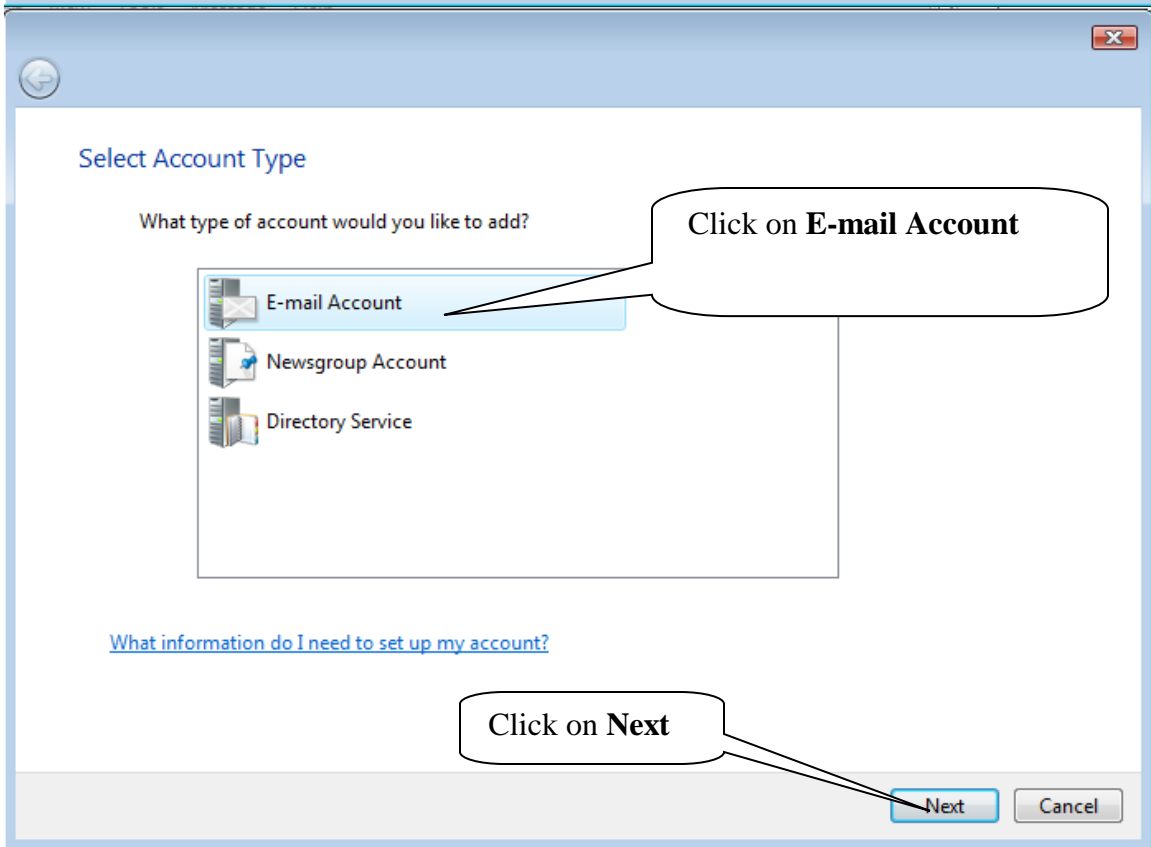
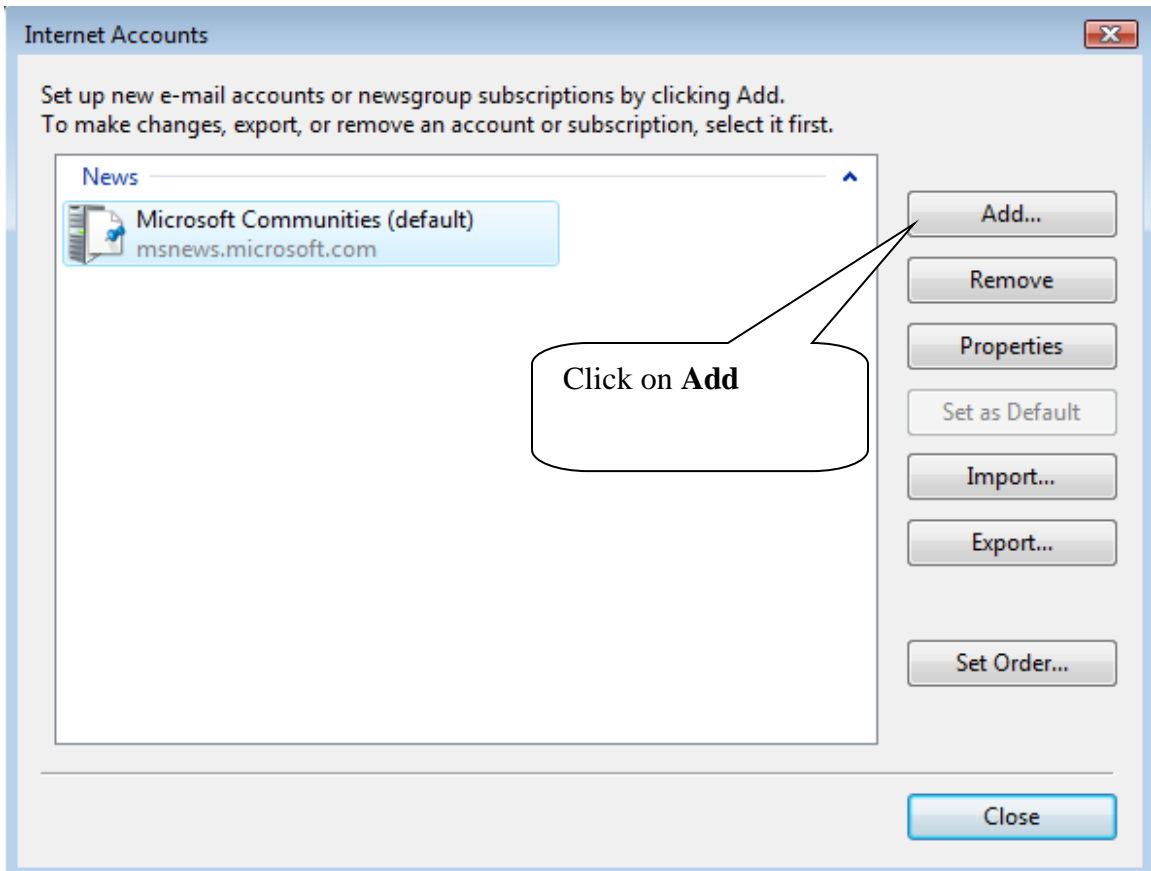


How to Configure Windows Vista Mail to send and receive Emails







Your Name

When you send e-mail, your name will appear in the From field of the outgoing message.
Type your name as you would like it to appear.

Display name:
For example: John Smith

[Where can I find my e-mail account information?](#)

Key in the Display name as you want it to appear on the 'From' Line on the e-mail...

Click on Next

Next Cancel

Internet E-mail Address

Your e-mail address is the address other people use to send e-mail messages to you.

E-mail address:
For example: someone@microsoft.com

[Where can I find my e-mail account information?](#)

Key in your E-mail address.

Click on Next

Next Cancel

Set up e-mail servers

Incoming e-mail server type:
POP3

Incoming mail (POP3 or IMAP) server:
your.mail.server

Outgoing e-mail server (SMTP) name:
your.mail.server

Outgoing server requires authentication

[Where can I find my e-mail server information?](#)

Next Cancel

For Incoming mail:
Rose.net=mail.rose.net
Cairo=pop3.syrupcity.net
Camilla=pop3.camilla.net
Pelham=mail.pelhamga.org

For Outgoing mail:
Rose.net=mail.rose.net
Cairo=smtp.syrupcity.net
Camilla=smtp.camilla.net
Pelham=mail.pelhamga.org

The image shows a screenshot of a Windows-style dialog box titled "Internet Mail Logon". The dialog has a blue header bar with a back arrow icon on the left and a close button (X) on the right. Below the title, there is a blue heading "Internet Mail Logon" and a grey instruction: "Type the account name and password your Internet service provider has given you." The form contains two text input fields: "E-mail username:" with the text "johndoe" and "Password:" with four black dots. Below the password field is a checked checkbox labeled "Remember password". At the bottom right, there are two buttons: "Next" (highlighted in blue) and "Cancel" (greyed out). Two callout boxes with black outlines and white backgrounds are present. One callout, located on the right side, points to the input fields and contains the text "Key in your username and password...". The second callout, located at the bottom center, points to the "Next" button and contains the text "Click on Next".

Internet Mail Logon

Type the account name and password your Internet service provider has given you.

E-mail username: johndoe

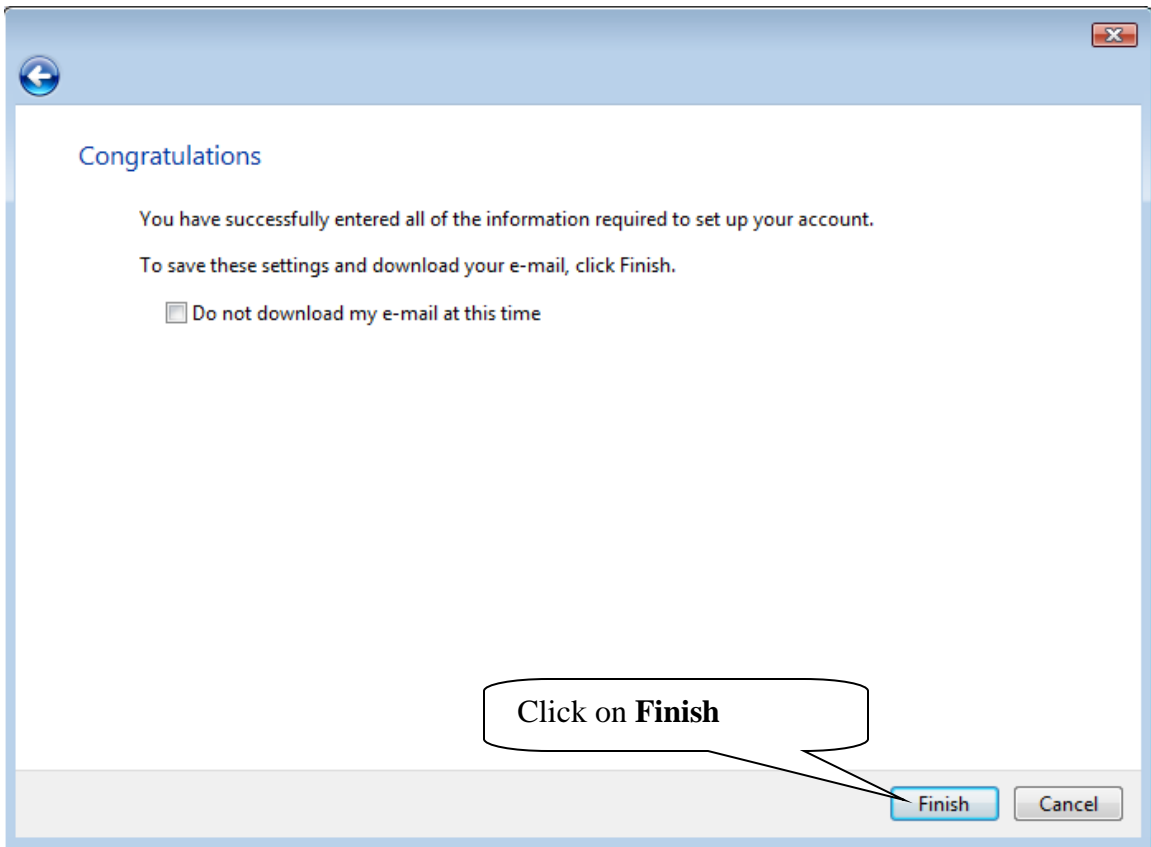
Password: ●●●●

Remember password

Next Cancel

Key in your username and password...

Click on Next



Congratulations

You have successfully entered all of the information required to set up your account.

To save these settings and download your e-mail, click Finish.

Do not download my e-mail at this time

Click on **Finish**

Finish

Cancel